





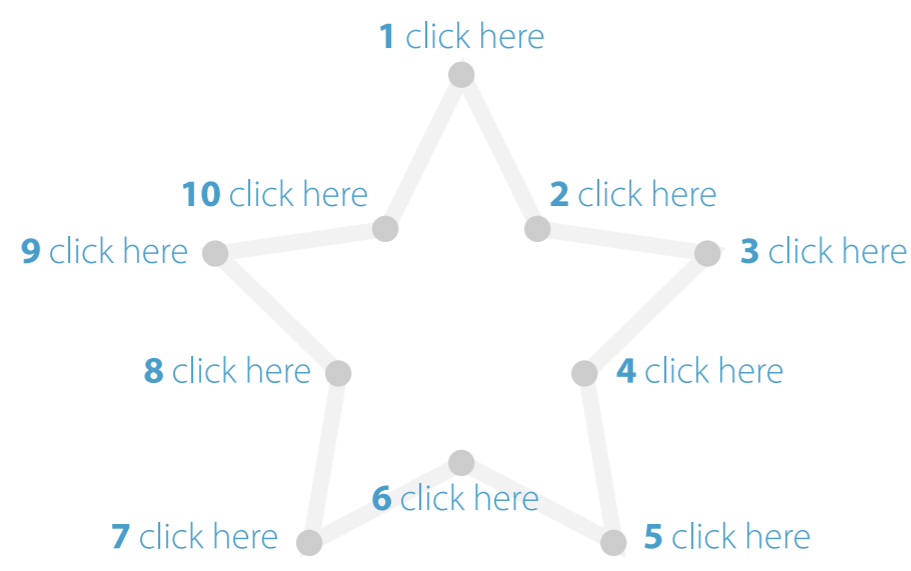


Pen tool exercises

Anchor point behavior signs

-  corner point sign
-  add to /continuing a path
-  adding an anchor point to the path
-  starting a new path
-  closing the path
-  deleting an anchor point to the path

Straight lines



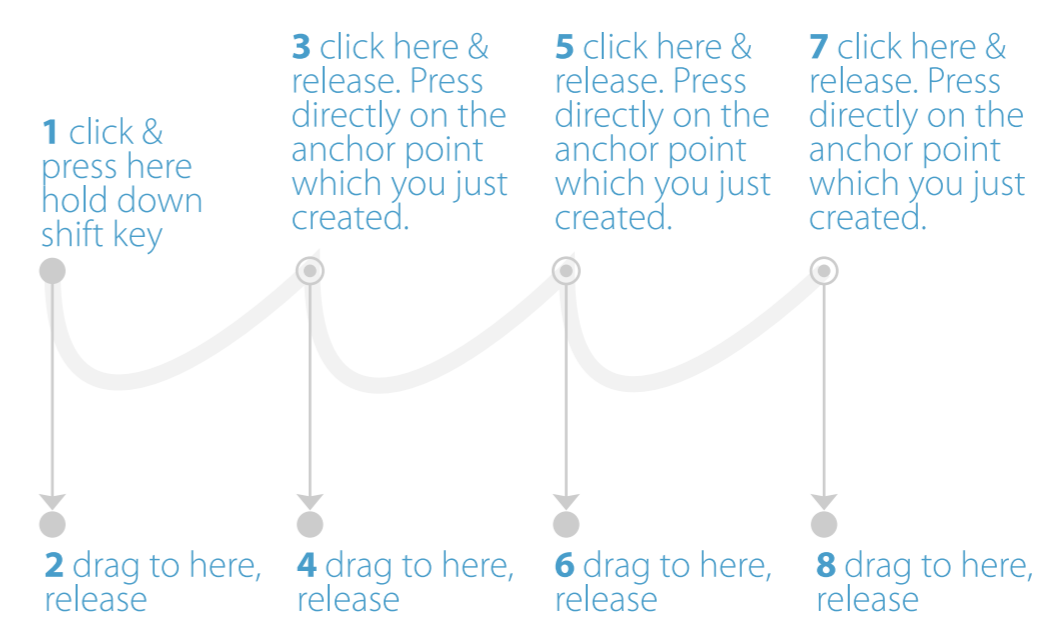
Curved lines



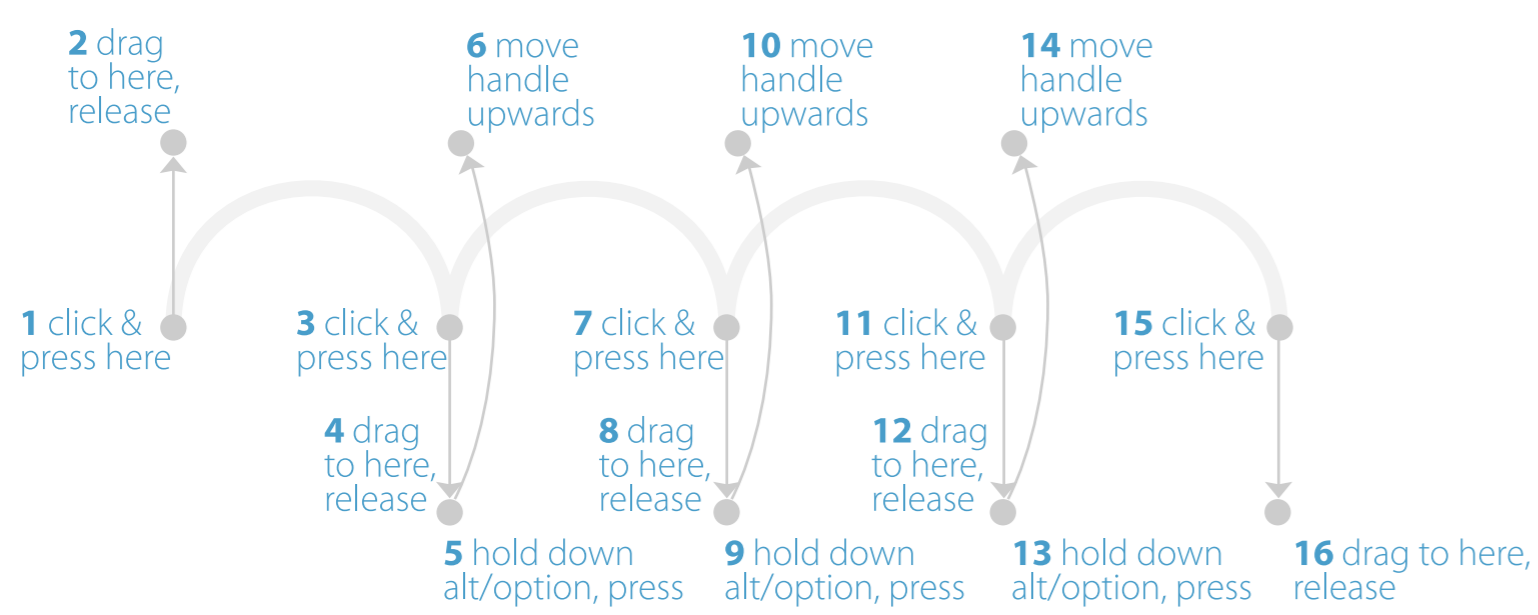
Multiple curves



Curves with corner points



Curves with corner points



Combining curves with straight lines



Curves with corner points and tweaking handles

